

SPEEDO AQUABEAT PLAYLIST EDITOR USER MANUAL

1. Program Overview

- The Playlist Editor is compatible with MS Windows 2000, XP and Vista versions
- The Playlist Editor enables the user to transfer songs from the PC, edit and create a playlist, set the play order and delete files on the AQUABEAT

2. How to use Playlist Editor

1) Main Screen

Window 1 : Shows file(s) in the AQUABEAT

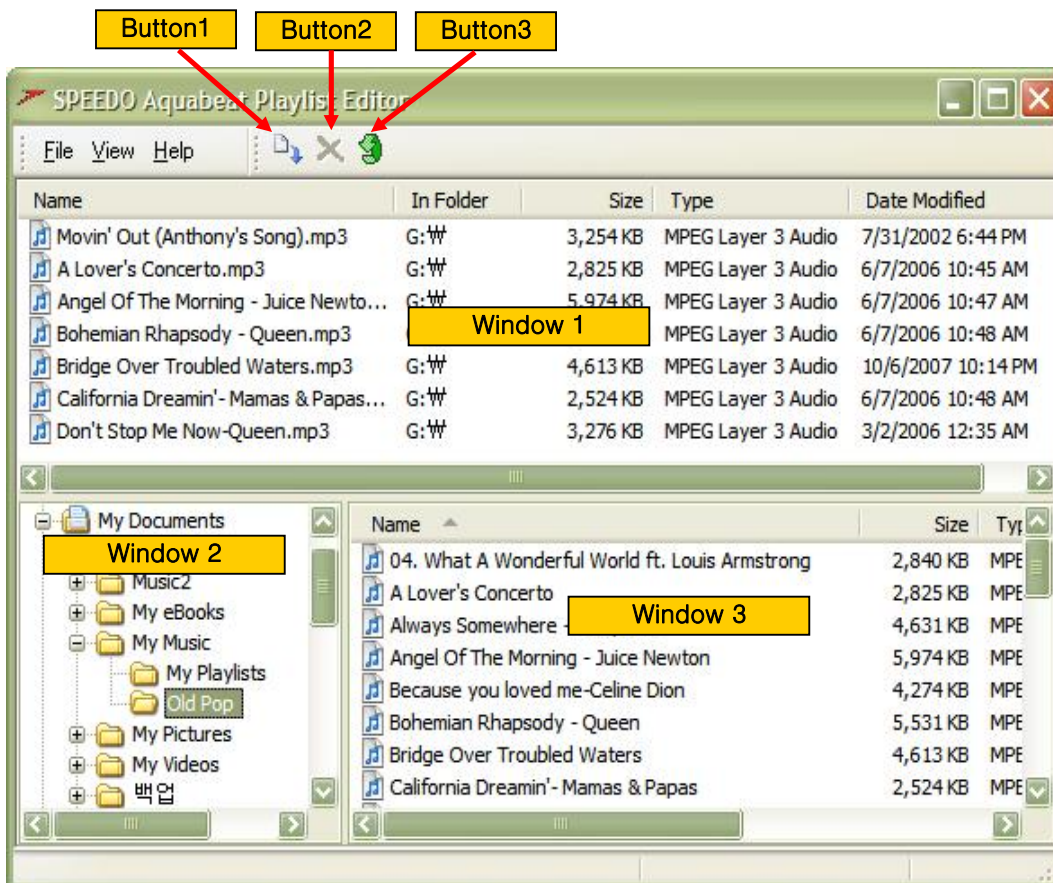
Window 2 : Shows folders in the PC

Window 3 : Shows file(s) in selected folder in Window 2

Button 1 : Set New Order button

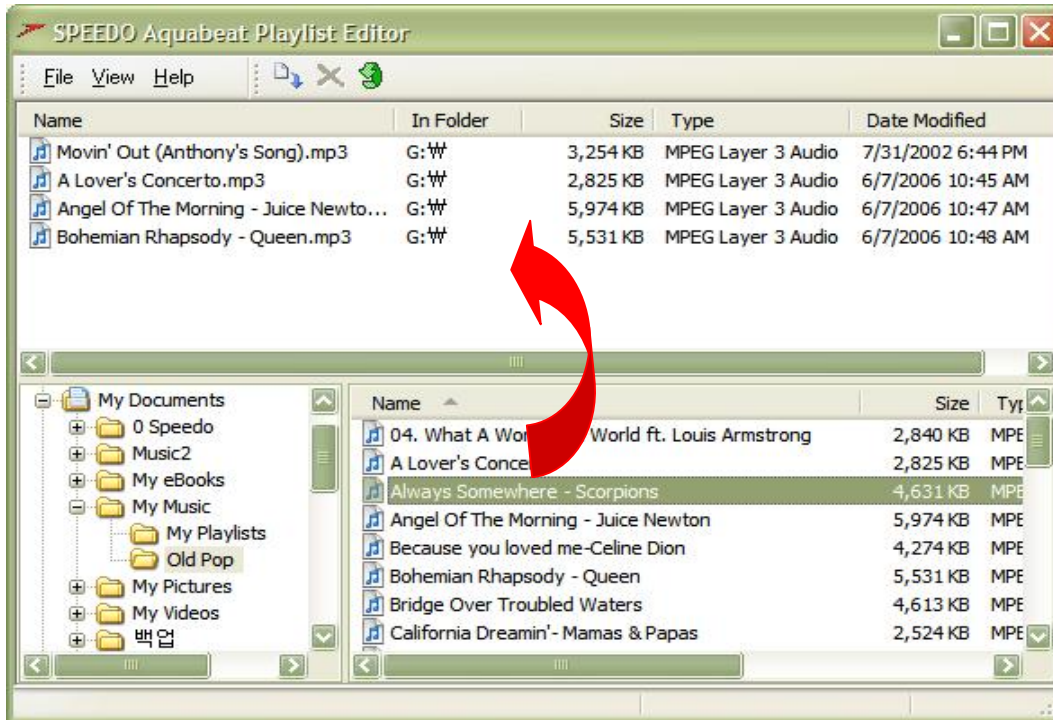
Button 2 : Delete button

Button 3 : Undo button



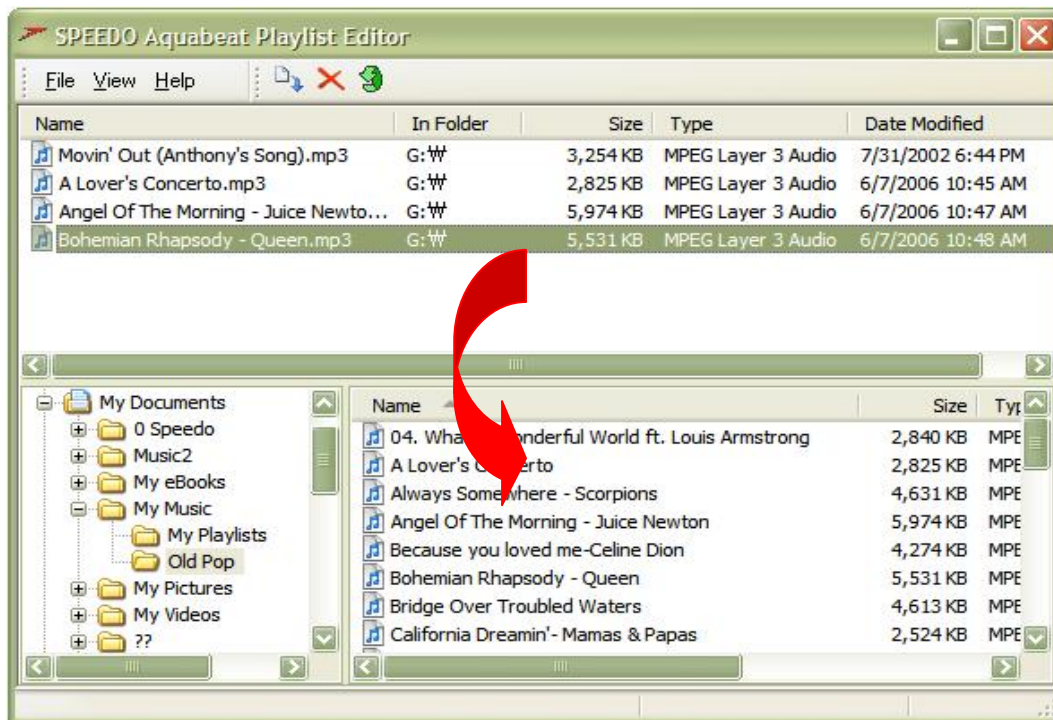
2) Transfer music file(s) from PC to the AQUABEAT

Select music file(s) in Window 3 then drag and drop selected file(s) in Window 1



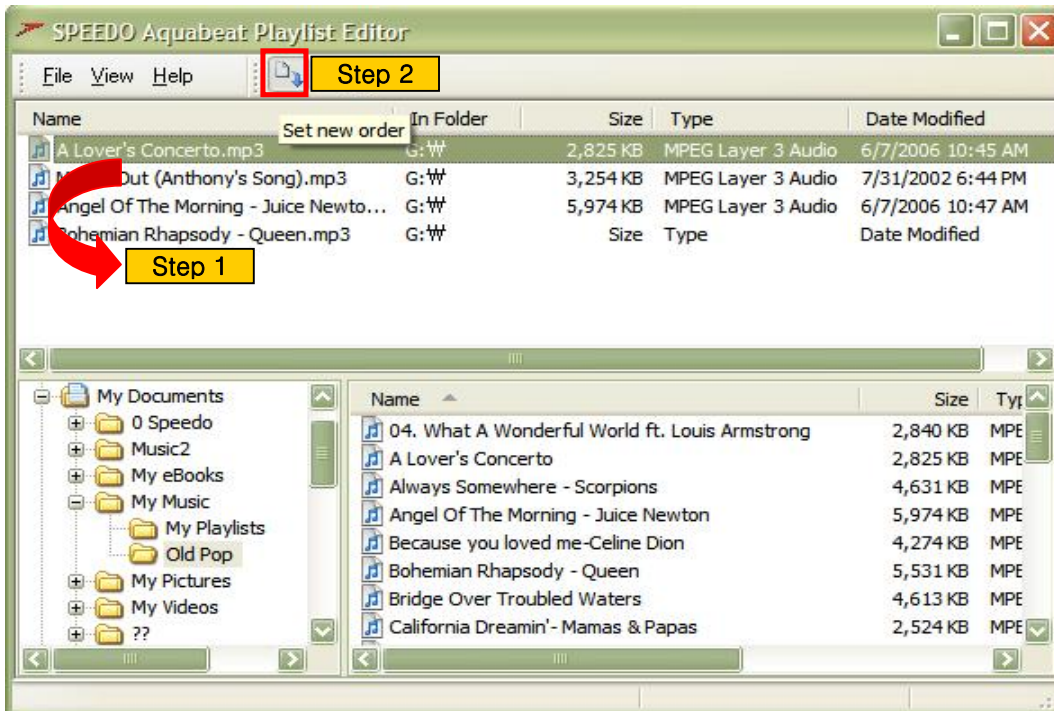
3) Transfer music file(s) from the AQUABEAT to PC

Select music file(s) in Window 1 then drag and drop selected file(s) in Window 3

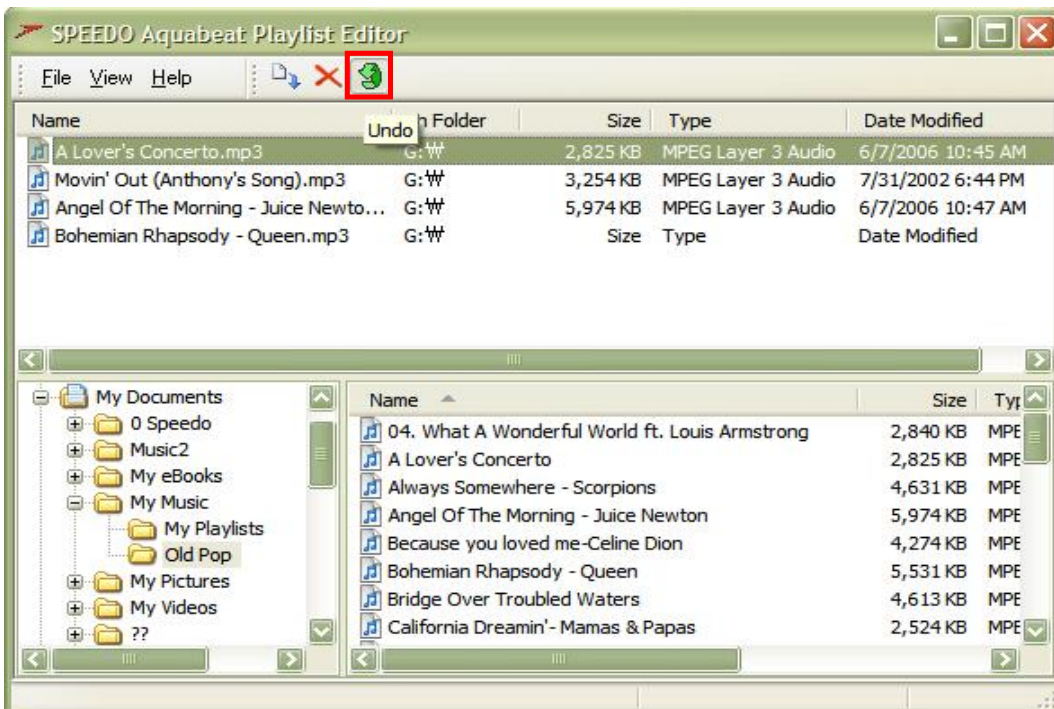


4) Change Play Order

- File on the top of Window 1 plays first
- Select music file you want to move up or down then drag and drop the place where you want to move
- After changing the play order, click the "Set new order" button to set the new play order

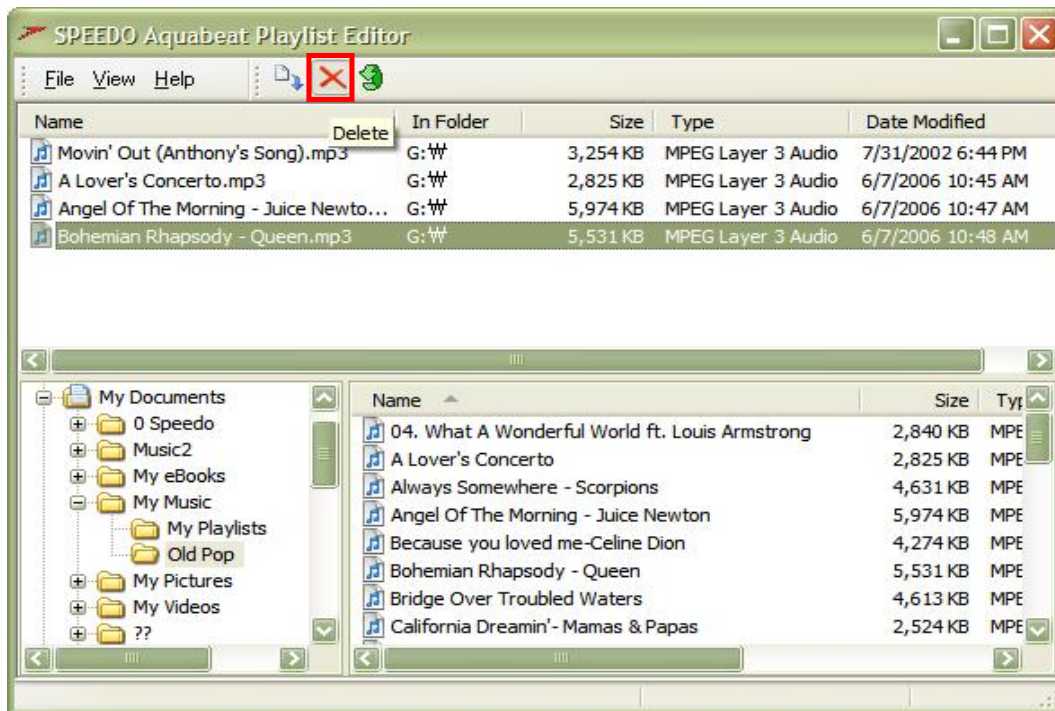


- If you want to keep the previous play order after making a change, click the "Undo" button
- The "Undo" button is disabled after clicking "Set new order" button



5) Delete music file(s)

- Select music file(s) in Window 1 then click "Delete" button



© 2007 SPEEDO HOLDINGS B.V All Rights Reserved.